

2021 EBN COMPANY PROFILE

The Nation's Leading Independent Network
for Employee Benefits and Related Services

www.ebenefitsnetwork.com

The eBenefits Network (eBN) Team

The eBenefits Network (eBN) team includes passionate domain experts, innovators, creators, engineers, and dedicated support personnel. eBN's collective team is obsessed with the success of clients and partners. eBN team members take personal responsibility and care to continually improve the user experience of all those touching its technology. eBN earns its stakeholders' trust through open communication processes, quick responsiveness, and delivering quality services. eBN's partners and clients are successful because of eBN's US-based resources, dedicated Account Managers, flexible processes, and unparalleled user experiences with its innovative and intuitive customer portal. The transparency of the portal allows for high-level overviews as well as drill-down features for reporting, tracking, implementing and production vantages.



CONTACT US



9108 Church St Ste 292
Manassas VA 20108



+800-788-5187



info@ebenefitsnetwork.com
www.ebenefitsnetwork.com

THE PROBLEM

Human Resource professionals are burdened with administrative tasks instead of concentration on strategic growth of a company. Benefit brokers are bogged down in tedious, error-ridden paperwork and rather than selling more by expanding their books of business. In each case, the technology available required multiple log-ins, various dashboards, and different tools for different BenAdmin, payment, tracking, and carrier communication tasks in addition to paperwork that requires faxing, mailing, scanning, emailing, etc. The complexity of the processes means mistakes are made that are costly in a variety of ways.

OUR SOLUTION

eBN's technology includes

- Automating processes such as enrollment, maintenance, and open enrollment.
- Eliminating paperwork by connecting directly to data within any system of record, and communicating seamlessly to carriers and broker and employer systems in the formats they require.
- Reducing errors by taking out manual, error-prone and time-wasting data entry and data-chasing headaches off the to-do lists of professionals--without changing existing systems.
- Technology solutions that work even for the smallest of groups.
- Dedicated Account Managers.

PARTNERSHIPS

Zenefits, iSolved, Kronos, VibeHCM, Insperity, EaseCentral, Lumity, FlockHCM, League, Netchex, Sage HRMS & many more!





eBN's Enterprise Data Integration Hub connects many-to-many data formats and protocols for HR and Payroll Systems providing 360 round trip integrations and data flow. eBN's workflow engine and file transformation services make any HR task simple, secure and scalable.

PRODUCT & SERVICES LIBRARY

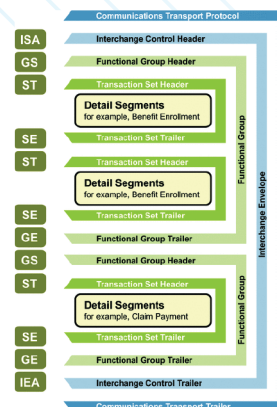
Carrier connectivity with a variety of available technologies, including API.

EDI: Electronic Data Interface

With EDI, you can maintain timely employee data changes, adds, terms, and even OE effortlessly with each carrier and benefit provider connected: EDI carrier connections. Choose how often your HR data is communicated to the carrier in a secure and nearly instant manner. Once a week, twice per week, twice per month. When a change is made in the HR system or BenAdmin system, that change is communicated directly to the carrier with no additional phone calls, faxes, email, or data entry points. eBN's Self-Testing Portal streamlines the EDI implementation process. Users can track all activities using the Transmission Dashboard. EDI ensures timely updates, secure relays, reduction of billing discrepancies, and error-free data transfer.

Multi-Tenant EDI

EDI was often only available to large groups. This left small groups stuck with no technology tools and the tedious manual processing and maintenance of benefit administration. Multi-Tenant EDI files allow for small groups to engage and leverage the technology once reserved only for the "big" guys."



DF: Digital Forms & Templates

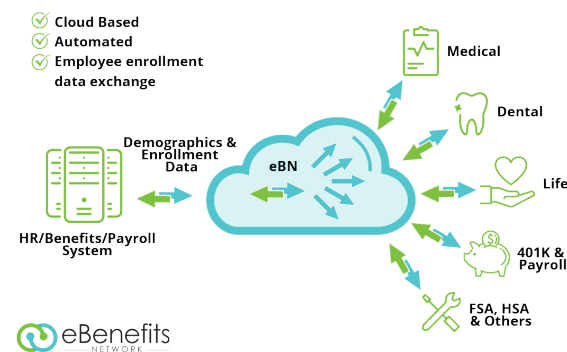
DF replaces the paperwork small groups have been burdened with when they are not qualified for EDI or other carrier connection methods. Digital Forms gives you access to a library of required forms usable online and whose data is then transmitted to the carrier. No more faxing, mailing, or even data entry. DF saves time, money, paper, and human error costs and delays.

Initial Load Service

Initial load service is for groups new to a carrier and enrollments need to be conveyed to the carrier. This file is only needed one time and is in a different format/structure that must be submitted before the ongoing 834 or layout EDI file is able to be tested and moved into production. Initial Load services expedites enrollment data so carrier connectivity testing and production can commence.

360 File Services

Keep employee contribution records and feedback from carriers and benefit providers up-to-date and accessible within your BenAdmin or HCM system. 360 means carriers and benefit providers provide data back to the system after receiving information from an employer group and its members. This allows access to the most up-to-date information including balances and census information.



eBenefits
NETWORK



Billing Reconciliation

Billing Reconciliation ensures groups are not overpaying premiums or failing to cover employees. These errors can waste time and money and open employers to liabilities. Billing Reconciliation ROI is significant.

Name	Status	SSN	TOTAL	2016-01	2016-02	2016-03	2016-04	2016-05	2016-06
Abdullah, Thabak	MAINTAINED	1111111111	2016.01	2016.02	2016.03	2016.04	2016.05	2016.06	2016.07
Abdullah, Thabak	MAINTAINED	1111111111	491.61						
Abdullah, Thabak	MAINTAINED	1111111111	1450.95						
Abdullah, Thabak	MAINTAINED	1111111111	1429.6						
Abdullah, Thabak	MAINTAINED	1111111111	40.56						
Abdullah, Thabak	MAINTAINED	1111111111	2277.38						
Abdullah, Thabak	MAINTAINED	1111111111	2560.72						
Abdullah, Thabak	MAINTAINED	1111111111	1215.73						
Abdullah, Thabak	MAINTAINED	1111111111	35.72						

Intelligent Marketplace

Vendors, brokers, employers, and employees have access to an intelligent Marketplace that uses data to match appropriate products to candidates who will benefit from them.

- Voluntary and supplemental benefits as well as other employee perks are made available and actively reach employees.
- The Marketplace offers a single access point for brokers and vendors to market relevant products in a timely, automated manner.
- The Marketplace makes selling to and accessing members of employer groups effortless.
- Employers are able offer employees additional benefits and perks at no additional cost to them.
- Employees benefit from access to products and services that make their lives better at prices discounted compared to the retail market. Studies prove that employee satisfaction is directly related to the sense of security and appreciation employers can offer their employees. The Marketplace allows an efficient and intelligent way to provide that peace of mind.



Billing Generation and Consolidation

Billing Generation and Consolidation allows for creation and/or consolidation of invoices in any format required.



Executive Team



Ash Rofail
CEO



Wessam Michaels
COO



Billy Smith
Sales Manager



Ashley Knight
Director



Amy Zewe
Director